



**SCOTMIN
NUTRITION**

EXPERTS IN
LIVESTOCK NUTRITION

PRODUCT GUIDE



WELCOME TO SCOTMIN NUTRITION

Formed in 1979, Scotmin Nutrition began as a family business supplying livestock nutritional supplements to local farmers. Since then Scotmin has grown into one of the largest livestock feed supplement businesses in the UK.

Our nutritional experts have over 100 years combined experience in animal nutrition, helping to ensure that our customers achieve maximum performance at minimum cost. We can do everything from analysing your silage to developing bespoke products that exactly meet the needs of your livestock and farming system.

As part of our company ethos we strive to reduce our carbon footprint through continued research and development of our products and manufacturing processes. Efficient logistics sees 62% of all our bulk mineral materials arriving via the Port of Ayr, a mere two kilometres from our manufacturing site. Continued product development has seen improvements in livestock performance, in turn helping to reduce the carbon footprint of each farm.

Our product range includes mineral supplements, molasses mineral tubs, protein concentrates, forage additives and specialised products. In June 2010 Scotmin joined Carr's Group plc. The combined knowledge and expertise gained from this partnership will ensure that our customers continue to receive top quality products, unrivalled service at exceptionally competitive prices.

*All product names, packaging and specifications are accurate at the time of printing ref:0920

WHY FEED MINERAL SUPPLEMENTS?

Most livestock are fed a forage based ration. Whether it is fresh or conserved the mineral content of such forages does not generally meet the animals' minimum dietary requirement. Modern grassland management further depresses the availability of minerals and trace elements therefore feeding supplements is an important practice to achieve efficient productivity from livestock.

Mineral/Trace Element	Typical Level in Grass	Typical Dietary Level (Cattle)
Calcium %	0.52	0.65
Phosphorus %	0.28	0.38
Magnesium %	0.18	0.25
Sodium %	0.2	0.25
Manganese mg/kg	130	80
Zinc mg/kg	27	80
Cobalt mg/kg	0.15	0.2
Iodine mg/kg	0.48	2.00
Selenium mg/kg	0.05	0.30
Copper mg/kg	6.80	20.00

Raw Materials

Whilst many supplement manufacturers work to least cost formulation, Scotmin considers it more important to use the highest quality and most bio-available raw materials at levels required by the animal. AGMA FG85 Calcined Magnesite is the leading magnesium source on the market and has been used in the manufacture of our supplements for over 25 years. Not only does it have high magnesium content but studies carried out by Glasgow University show AGMA to be the market's most bio-available and consistent product. (Parker & Hemingway 1989, Parker, Ritchie & Hemingway 1989).

Product	Availability % Trial 1	Availability % Trial 2
AGMA	27.0	27.1
Navarras	26.0	23.2
Chinese	11.0	12.6
Greek	15.5	12.6

A more recent study conducted in Holland showed that 50% more magnesium was absorbed by animals fed AGMA compared to those fed Chinese Cal Mag. The very consistent particle size, large surface area, and consistent temperature during production of AGMA are important factors influencing its efficacy. Likewise, our phosphorus sources are chosen for their consistently high purity and have superior biological value to most.

“Research and product development is at the heart of what we do. In this day and age it is vitally important for us to closely monitor industry trends and adapt our products accordingly in order to continue meeting the exact requirements of today’s livestock.”

ALAN RICHMOND - TECHNICAL MANAGER



10

EWE & LAMB
PRE-CALVER
DRY COW
SUCKLER COW
HYDROBOOST

26

DAIRY
DAIRY PLUS
CATTLE
SUCKLER
HIGH-MAG
INTENSIVE BEEF
CALF MENTHOL
SHEEP
INTENSIVE LAMB
RUMEN BUFFER
BIOBIND



40

CATTLE
COMPLETE
CATTLE EXTRA
QUATTRO MAG CATTLE
QUATTRO MAG SHEEP
SHEEP BOOSTER
GARLIC GRAZER
MENTHOL

52

COMPLETE
CATTLE
PRE-TUPPING
MAG
MAG CATTLE
PROACTIVE



62

FARM MIX
BEEF BIOSPRINT

68

GROWER
FLEX
INTENSIVE
FINISHER
EWE & LAMB
THRIVON



78

MEGASILE
MEGASILE HDM

82

PLUS
FIT
SPEED M



90

UNIVERSAL
EXTRA
NATURAL

96

SCOTFAT
BUTTERSCOTCH



MEGASTART

AN INNOVATIVE RANGE
OF CALVING AND LAMBING
SUPPLEMENTS



MEGASTART EWE & LAMB

Careful management of ewes during late pregnancy is key to a trouble-free lambing and for the discerning shepherd, Megastart Ewe & Lamb can form a key part of this strategy.

Megastart Ewe & Lamb is a free-choice feed lick designed to supplement the ewe during the 4-6 weeks before lambing. With intakes between 100-150g per day Megastart Ewe & Lamb supplies high energy, high quality protein, Vitamin E and selenium, important factors in the production of rich colostrum. Megastart Ewe & Lamb also incorporates a specific cell wall material produced from a single strain of yeast which contains a high level of specific sugars called Mannan-oligosaccharides (MOS) and beta glucans, inclusion of which has been shown, by independent research, to stimulate the immune system and improve colostrum quality and yield.

Megastart Ewe & Lamb has undergone rigorous research and development, proving itself to be one of the UK's leading pre-lambing supplements. Independent trials undertaken at Myerscough College showed that when twin-bearing Mule ewes, were fed Megastart Ewe & Lamb for the final month of pregnancy a significantly increased colostrum IgG content was recorded when compared to control ewes that were fed the same high-quality diet.



For:
Sheep

Feeding Time:
Spring

Feeding Rate:
100-150g head/day

Available in:
20kg+80kg

- ▶ A high intake, free access feed tub used in the 4-6 weeks prior to lambing.
- ▶ Provides ewes with an excellent source of energy from sugars, starch and protected fat and high quality rumen bypass protein to meet the increased demands of the pregnant ewe.
- ▶ A balanced source of minerals, protein and vitamins, including Vitamin E to improve lamb vigour and Vitamin B1 to reduce problems with CCN.
- ▶ Contains a unique MOS, designed to activate the animals' immune system and improve colostrum quality.
- ▶ Lactose inclusion provides a readily available carbohydrate source.

Megastart Ewe & Lamb Specification			
Calcium %	6.7	Vitamin A iu/kg	50000
Magnesium %	1.5	Vitamin D ₃ iu/kg	10000
Phosphorus %	0.2	Vitamin E mg/kg	1000
Sodium %	3	Vitamin B ₁₂ ug/kg	500
Manganese mg/kg	500	Vitamin B ₁ iu/kg	200
Zinc (total) mg/kg	1000	Protein %	12.2
Zinc (protected) mg/kg	250	Oil %	12.2
Cobalt mg/kg	5	ME (DM) MJ/kg	12.8
Iodine mg/kg	25	MOS & β-Glucans mg/kg	✓
Selenium mg/kg	3		



MEGASTART EWE & LAMB

Megastart Ewe & Lamb has proven itself to be a leading pre-lambing supplement, and more recently it has been proven to improve DLWG in lambs at grass.

An independent trial conducted at Myerscough College in 2013 involving 120 Texel X lambs shows lambs fed Megastart Ewe & Lamb grow faster compared to lambs fed grass alone. Growth rates of the Megastart and control groups were 160g/day vs 120g/day respectively, a 33% statistically significant improvement when Megastart is fed.

A balanced source of minerals, protein and vitamins, Megastart Ewe & Lamb also provides lambs with an excellent source of energy from sugars, starch and protected fat to achieve a quicker finish at grass allowing for a reduction in feed costs and a sharper turn around on finished stock.

The conclusion of the trial states that even after the cost of the product is taken into account, a substantial increase in profit can be achieved when Megastart Ewe & Lamb is made available to lambs at grass.

“Supplementation of Megastart Ewe & Lamb is a cost-effective method of enhancing the fattening process and making finishing lambs a more profitable enterprise for the farmer.”



MEGASTART PRE-CALVER

Megastart Pre-Calver is a valuable supplement for both dairy and suckler cows during the dry period. With a low level of calcium and a high level of magnesium, Megastart Pre-Calver can be used in conjunction with a balanced dry cow diet to reduce the risk of milk fever at calving.

This molasses mineral lick is designed to be fed on a free-choice basis in the last 4-6 weeks of pregnancy where daily intakes are typically 100-200g per head.

Megastart Pre-Calver also contains a specific cell wall material produced from a single strain of yeast. The yeast product contains a high level of specific sugars called mannan oligosaccharides (MOS) and beta glucans, inclusion of which has been shown, by independent research, to stimulate the immune system and improve colostrum quality and yield.

Also included is a full complement of trace minerals for the dry period including copper and zinc from both conventional and protected glycinate sources. In addition a proportion of selenium comes from a selenium enriched yeast.

All of this is combined with optimum levels of Vitamin E and iodine, ensuring that Megastart Pre-Calver is a product that farmers can truly rely on during the dry period.



For:
Beef & Dairy

Feeding Time:
Dry Period

Feeding Rate:
100-200g head/day

Available in:
20kg+80kg

- ▶ Pre-calving supplement for non-lactating cows in the last 4-6 weeks of gestation
- ▶ High levels of Selenium and Vitamin E for quality colostrum
- ▶ Designed to increase colostrum yield
- ▶ Contains a unique MOS to improve gut condition
- ▶ Low in Calcium and high in Magnesium to stimulate the cow's metabolism and help reduce the risk of milk fever
- ▶ Promotes easier calving

Megastart Pre-Calver Specification

Calcium %	3.6	Cobalt mg/kg	50
Magnesium %	10.0	Iodine mg/kg	250
Phosphorus %	2.0	Selenium (total) mg/kg	25
Sodium %	6.7	Selenium (protected) mg/kg	2
Manganese mg/kg	2000	Vitamin A iu/kg	200000
Zinc (total) mg/kg	4000	Vitamin D ₃ iu/kg	40000
Zinc (protected) mg/kg	300	Vitamin E mg/kg	5000
Copper (total) mg/kg	1250	Vitamin B ₁₂ ug/kg	2000
Copper (protected) mg/kg	250	MOS & β-Glucans mg/kg	✓

MEGASTART DRY COW

This low calcium powdered mineral is designed to be fed to the pregnant cow in the last 4-6 weeks of gestation, in order to prepare the cow for calving and lactation.

Combining high levels of both Vitamin E and selenium. Megastart Dry Cow promotes a healthy immune system and is designed to optimise colostrum quality.

The inclusion of MOS acts to trigger an auto-immune response and bind to bacteria and pathogens in the digestive system of the animal, in order to maximise gut health and nutrient absorption. Megastart Dry Cow will help in the management of a stress-free calving.



For:
Beef & Dairy

Feeding Time:
Dry Period

Feeding Rate:
100-150g head/day

Available in:
25kg

- ▶ Incorporates a comprehensive range of minerals and trace elements meaning there is little or no need for further supplementation
- ▶ Can be fed as part of a pre-calving ration, mixed with cereals, incorporated in a TMR system or simply top dressed
- ▶ Contains a unique single strain MOS to improve gut condition
- ▶ Low levels of calcium to stimulate the cow's metabolism
- ▶ Copper, zinc and selenium included in protected form
- ▶ Reduces the incidences of milk fever
- ▶ Promotes easier calving

Megastart Dry Cow Specification

Calcium %	1.4	Cobalt mg/kg	60
Magnesium %	20	Iodine mg/kg	300
Phosphorus %	4	Selenium (total) mg/kg	27.5
Sodium %	12.8	Selenium (protected) mg/kg	2.5
Manganese mg/kg	3000	Vitamin A iu/kg	500000
Zinc (total) mg/kg	6000	Vitamin D ₃ iu/kg	100000
Zinc (protected) mg/kg	500	Vitamin E mg/kg	5000
Copper (total) mg/kg	1500	Vitamin B ₁₂ ug/kg	3000
Copper (protected) mg/kg	200	MOS & β-Glucans mg/kg	✓

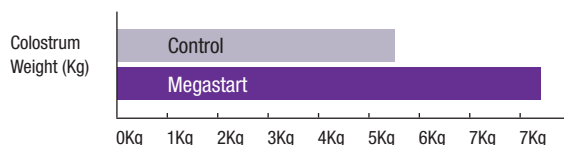


MEGASTART DRY COW

Megastart Dry Cow Improves Colostrum Yield

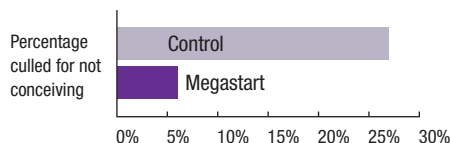
To determine the effects Megastart Dry Cow has on colostrum, a trial at Myerscough College was commissioned*. This trial looked at the effect of supplementing pregnant Holstein cross Friesian cows with Megastart Dry Cow 4-6 weeks pre-calving, when compared to an ordinary dry cow mineral.

The outcome of the trial was a statistically significant - an extra 1.96kg of colostrum ($P=0.024$) produced by the Megastart group at first milking.



This 35% increase in colostrum production immediately post-calving is good news; extra nutrition (fat, total solids, proteins, electrolytes, vitamins etc.) for the neonatal calf, just when it is required!

The increased colostrum yield did not come with reduced colostrum quality as can be the case with other products. In this trial the IgG content of the colostrum was not statistically different between control and cows receiving Megastart resulting in an increased yield of IgG.



The huge reduction in cows culled for not conceiving in the Megastart group suggests a stronger immune response and improved egg quality.

Keeping just one extra cow in the herd for another lactation saves the rearing cost of a replacement heifer (£1819 average, MDC data) or allows another heifer to be sold to improve farm income

“In a trial involving Holstein/Friesian dairy cows, Megastart Dry Cow significantly improved colostrum yield by 35%”



ANYA WESTLAND - LEAD RESEARCHER

“All calves in Megastart treatment looked very fit and healthy and seemed to get away quicker than the control”



ROGER LEACH - FARM MANAGER

MEGASTART SUCKLER COW

Megastart Suckler Cow is a powdered mineral specifically designed for suckler cows pre and post-calving, supplying all the necessary minerals and vitamins required for a healthy cow and calf.

With a high level of magnesium, this mineral is suited to all year round supplementation. The weather proofing included makes it suitable to feed outdoors in a trough, top dressed, or included in a TMR.

MOS is included to promote a healthy gut, with optimum levels of zinc and iodine included to aid the immune system response.

High Vitamin E and selenium levels help to increase the quantity of colostrum, a vital factor in the early development of the calf's immune system. The selenium level also helps combat typically low levels seen in UK forages.



For:
Beef & Dairy

Feeding Time:
Pre/Post Calving

Feeding Rate:
100-150g head/day

Available in:
25kg

- ▶ Specially formulated to provide suckler cows the minerals and vitamins they need pre and post-calving
- ▶ Weather proofed for inside and outside feeding
- ▶ Promotes a healthy immune system
- ▶ Increases quantity of colostrum – vital in the early life of the calf
- ▶ Contains MOS designed to promote gut health

Megastart Dry Cow Specification			
Calcium %	16.7	Cobalt mg/kg	40
Magnesium %	12	Iodine mg/kg	300
Phosphorus %	2	Selenium (total) mg/kg	25
Sodium %	8	Selenium (protected) mg/kg	2
Manganese mg/kg	2000	Vitamin A iu/kg	400000
Zinc (total) mg/kg	6500	Vitamin D ₃ iu/kg	80000
Zinc (protected) mg/kg	500	Vitamin E mg/kg	2500
Copper (total) mg/kg	1500	Vitamin B ₁₂ ug/kg	2000
Copper (protected) mg/kg	200	MOS & β-Glucans mg/kg	✓

MEGASTART HYDROBOOST

Calving is a stressful period for any cow due to the large physiological demands placed upon her body. Prior to calving both appetite and thirst tend to be reduced leading to hunger and some degree of dehydration post calving.

Once calved, there is a new demand on the cow's body which is the production of milk. It is at this time the cow is at greatest risk of milk fever.

In a well-managed dry cow ration, such as incorporating Megastart Dry Cow, Megastart Suckler or Megastart Pre-Calver tubs, dietary calcium is low and magnesium is high helping prime the cow's body for the mobilisation of calcium from the body reserves. However, post calving it is essential to get the cow consuming sufficient supplemental calcium to maintain normal serum calcium levels. The most effective way of delivering supplementary calcium is via its inclusion in a post calving drink which not only provides the additional calcium but provides rehydration and additional electrolytes to the cow.

Megastart Hydro Boost is a new innovation from Scotmin Nutrition which goes further than other rehydration drinks by supplying more calcium in a readily soluble form along with a larger energy contribution, stimulating the cow's appetite aiding a faster and easier transition into lactation.



For:
Beef & Dairy

Feeding Time:
Freshly Calved Cows

Feeding Rate:
1kg made to 20
litres

Available in:
10kg

- ▶ Water soluble electrolyte formulation for freshly calved cows immediately after calving
- ▶ Provides readily available energy and calcium
- ▶ Stimulates appetite post calving for a faster and easier transition into lactation

MEGAMINS

PREMIUM BAGGED
MINERAL SUPPLEMENTS
FOR DAIRY, BEEF
AND SHEEP



MEGAMINS MINERAL RANGE

A fully comprehensive range of mineral supplements designed to enhance a wide range of on-farm feeding systems.

MEGAMINS are specially formulated to incorporate the most bioavailable raw materials to maximise production efficiency and reduce cost. Developed from years of forage analysis and trend tracking, MEGAMINS is specially tailored to current UK farming requirements.



For:
Beef & Dairy

Feeding Time:
All Year

Feeding Rate:
Youngstock:
75-100g head/day
Mature livestock:
100-150g head/day

Available in:
25kg

MEGAMINS CATTLE

- ▶ Perfect mineral to balance a range of forage based diets
- ▶ Full of essential vitamins, minerals and trace elements to support production
- ▶ Suitable to balance low yielding dairy cow diets as well as supplementing suckler cows and growing stock

Megamins Cattle Specification			
Calcium %	24.0	Selenium yeast mg/kg	-
Phosphorus %	2.0	Copper (total) mg/kg	1500
Magnesium %	4.0	Copper sulphate mg/kg	1500
Sodium %	7.8	Chelated copper mg/kg	-
Sulphur %	-	Iron sulphate mg/kg	-
Manganous oxide mg/kg	2000	Vitamin A iu/kg	300000
Zinc (total) mg/kg	4000	Vitamin D ₃ iu/kg	60000
Zinc oxide mg/kg	4000	Vitamin E mg/kg	1000
Chelated Zinc mg/kg	-	Vitamin B ₁ mg/kg	-
Cobalt mg/kg	60	Vitamin B ₁₂ mcg/kg	3000
Iodine mg/kg	200	Vitamin B ₂ mg/kg	-
Selenium (total) mg/kg	30	IF/FA	I/F
Selenium (BMP) mg/kg	30	Biosprint Y/N	N



For:
Dairy

Feeding Time:
All Year

Feeding Rate:
150g head/day

Available in:
25kg



For:
Dairy

Feeding Time:
All Year

Feeding Rate:
200g head/day

Available in:
25kg

MEGAMINS DAIRY

- ▶ Contains a balance of essential traces, minerals and vitamins perfect to balance high to mid yielding dairy diets
- ▶ Ample quantities of phosphorus and magnesium to balance today's dairy diets
- ▶ Contains protected sources of trace elements to ensure uptake in the presence of antagonists within the diet

Megamins Dairy Specification

Calcium %	21.0	Selenium yeast mg/kg	2.0
Phosphorus %	4.0	Copper (total) mg/kg	2000
Magnesium %	5.0	Copper sulphate mg/kg	1750
Sodium %	7.8	Chelated copper mg/kg	250
Sulphur %	-	Iron sulphate mg/kg	-
Manganous oxide mg/kg	3000	Vitamin A iu/kg	400000
Zinc (total) mg/kg	6000	Vitamin D ₃ iu/kg	80000
Zinc oxide mg/kg	5750	Vitamin E mg/kg	2000
Chelated Zinc mg/kg	250	Vitamin B ₁ mg/kg	-
Cobalt mg/kg	80	Vitamin B ₁₂ mcg/kg	3000
Iodine mg/kg	400	Vitamin B ₂ mg/kg	-
Selenium (total) mg/kg	35	IF/FA	I/F
Selenium (BMP) mg/kg	33	Biosprint Y/N	N

MEGAMINS DAIRY PLUS

- ▶ Contains all of the essential qualities of the Megamins Dairy mineral with elevated levels of phosphorus, vitamins and chelates to support higher production levels
- ▶ Perfect for high yielding dairy cows
- ▶ Contains Biosprint yeast to maintain an efficient rumen at peak lactation

Megamins Dairy Plus Specification

Calcium %	19.5	Selenium yeast mg/kg	5.0
Phosphorus %	5.0	Copper (total) mg/kg	2000
Magnesium %	5.0	Copper sulphate mg/kg	1500
Sodium %	7.8	Chelated copper mg/kg	500
Sulphur %	-	Iron sulphate mg/kg	-
Manganous oxide mg/kg	3000	Vitamin A iu/kg	500000
Zinc (total) mg/kg	6000	Vitamin D ₃ iu/kg	100000
Zinc oxide mg/kg	5500	Vitamin E mg/kg	3000
Chelated Zinc mg/kg	500	Vitamin B ₁ mg/kg	-
Cobalt mg/kg	80	Vitamin B ₁₂ mcg/kg	3000
Iodine mg/kg	400	Vitamin B ₂ mg/kg	-
Selenium (total) mg/kg	40	IF/FA	I/F
Selenium (BMP) mg/kg	35	Biosprint Y/N	Y



For:
Beef

Feeding Time:
All Year

Feeding Rate:
100-150g head/day

Available in:
25kg



For:
Beef

Feeding Time:
All Year

Feeding Rate:
100-150g head/day

Available in:
25kg

MEGAMINS SUCKLER

- ▶ Specially formulated for suckler cows for all year round use
- ▶ Contains quality sources of minerals and trace elements to support the production needs of a suckler cow
- ▶ Designed to balance UK forage deficiencies

Megamins Suckler Specification			
Calcium %	16.3	Selenium yeast mg/kg	-
Phosphorus %	4.0	Copper (total) mg/kg	1500
Magnesium %	12.0	Copper sulphate mg/kg	1500
Sodium %	8.0	Chelated copper mg/kg	-
Sulphur %	-	Iron sulphate mg/kg	-
Manganous oxide mg/kg	2000	Vitamin A iu/kg	300000
Zinc (total) mg/kg	6000	Vitamin D ₃ iu/kg	60000
Zinc oxide mg/kg	6000	Vitamin E mg/kg	1000
Chelated Zinc mg/kg	-	Vitamin B ₁ mg/kg	-
Cobalt mg/kg	60	Vitamin B ₁₂ mcg/kg	2000
Iodine mg/kg	600	Vitamin B ₂ mg/kg	-
Selenium (total) mg/kg	35	IF/FA	F/A
Selenium (BMP) mg/kg	35	Biosprint Y/N	N

MEGAMINS HIGH-MAG

- ▶ High quality magnesium source from Spanish AGMA
- ▶ Flavoured to encourage consistent intakes
- ▶ Increased level of sodium to aid magnesium absorption.
- ▶ Fully water-proofed to allow for free access feeding

Megamins High Mag Specification			
Calcium %	10.3	Selenium yeast mg/kg	-
Phosphorus %	1.5	Copper (total) mg/kg	2000
Magnesium %	20.0	Copper sulphate mg/kg	2000
Sodium %	11.0	Chelated copper mg/kg	-
Sulphur %	-	Iron sulphate mg/kg	-
Manganous oxide mg/kg	1000	Vitamin A iu/kg	100000
Zinc (total) mg/kg	1500	Vitamin D ₃ iu/kg	20000
Zinc oxide mg/kg	1500	Vitamin E mg/kg	500
Chelated Zinc mg/kg	-	Vitamin B ₁ mg/kg	-
Cobalt mg/kg	60	Vitamin B ₁₂ mcg/kg	1000
Iodine mg/kg	100	Vitamin B ₂ mg/kg	-
Selenium (total) mg/kg	30	IF/FA	F/A
Selenium (BMP) mg/kg	30	Biosprint Y/N	N

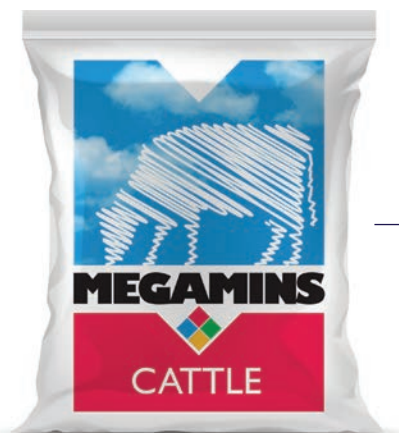


For:
Beef

Feeding Time:
All Year

Feeding Rate:
100-150g head/day

Available in:
25kg



For:
Beef

Feeding Time:
All Year

Feeding Rate:
25-60g head/day

Available in:
25kg

MEGAMINS INTENSIVE BEEF

- ▶ Perfect for intensive beef fattening systems
- ▶ Added iron sulphate to protect against low iron cereal and straw based diets
- ▶ Contains no additional magnesium or phosphorus
- ▶ Good levels of salt to stimulate appetite and encourage salivation

Megamins Intensive Beef Specification			
Calcium %	26	Selenium yeast mg/kg	-
Phosphorus %	-	Copper (total) mg/kg	600
Magnesium %	0.3	Copper sulphate mg/kg	600
Sodium %	10.0	Chelated copper mg/kg	-
Sulphur %	-	Iron sulphate mg/kg	2000
Manganous oxide mg/kg	2000	Vitamin A iu/kg	300000
Zinc (total) mg/kg	2400	Vitamin D ₃ iu/kg	60000
Zinc oxide mg/kg	2400	Vitamin E mg/kg	2500
Chelated Zinc mg/kg	-	Vitamin B ₁ mg/kg	-
Cobalt mg/kg	40	Vitamin B ₁₂ mcg/kg	2000
Iodine mg/kg	80	Vitamin B ₂ mg/kg	-
Selenium (total) mg/kg	15	IF/FA	I/F
Selenium (BMP) mg/kg	15	Biosprint Y/N	N

MEGAMINS CALF MENTHOL

- ▶ Specifically designed for calves who are temporarily or permanently housed
- ▶ Packed with vitamins, minerals and trace elements to support good health
- ▶ Contains a combination of menthol oil, eucalyptus oil and garlic to maintain clear airways

Megamins Calf Menthol Specification			
Calcium %	15.1	Selenium yeast mg/kg	-
Phosphorus %	2.0	Copper (total) mg/kg	1000
Magnesium %	4.0	Copper sulphate mg/kg	1000
Sodium %	15.0	Chelated copper mg/kg	-
Sulphur %	4	Iron sulphate mg/kg	-
Manganous oxide mg/kg	2000	Vitamin A iu/kg	300000
Zinc (total) mg/kg	4000	Vitamin D ₃ iu/kg	60000
Zinc oxide mg/kg	4000	Vitamin E mg/kg	3000
Chelated Zinc mg/kg	-	Vitamin B ₁ mg/kg	200
Cobalt mg/kg	40	Vitamin B ₁₂ mcg/kg	2000
Iodine mg/kg	200	Vitamin B ₂ mg/kg	200
Selenium (total) mg/kg	20	IF/FA	I/F
Selenium (BMP) mg/kg	20	Biosprint Y/N	N
Vitamin C mg/kg	4000		



For:
Sheep

Feeding Time:
All Year

Feeding Rate:
20-30g head/day

Available in:
25kg

MEGAMINS SHEEP

- ▶ Perfect mineral to be fed through a TMR or by top dressing
- ▶ Well balanced to support sheep in the run up to lambing
- ▶ Contains Vitamin B1 to help in protecting against CCN

Megamins Sheep Specification			
Calcium %	24.6	Selenium yeast mg/kg	-
Phosphorus %	3.0	Copper (total) mg/kg	-
Magnesium %	1.0	Copper sulphate mg/kg	-
Sodium %	8.0	Chelated copper mg/kg	-
Sulphur %	-	Iron sulphate mg/kg	-
Manganous oxide mg/kg	3000	Vitamin A iu/kg	400000
Zinc (total) mg/kg	4000	Vitamin D ₃ iu/kg	80000
Zinc oxide mg/kg	4000	Vitamin E mg/kg	2000
Chelated Zinc mg/kg	-	Vitamin B ₁ mg/kg	1000
Cobalt mg/kg	40	Vitamin B ₁₂ mcg/kg	3000
Iodine mg/kg	200	Vitamin B2 mg/kg	-
Selenium (total) mg/kg	25	IF/FA	F/A
Selenium (BMP) mg/kg	25	Biosprint Y/N	N



For:
Sheep

Feeding Time:
All Year

Feeding Rate:
15-20g head/day
(for in feed use only)

Available in:
25kg

MEGAMINS INTENSIVE LAMB

- ▶ Contains ammonium chloride to aid in the prevention of urinary calculi
- ▶ Iron introduced to aid copper lock up
- ▶ Designed for intensively reared lambs

Megamins Intensive Lamb Specification			
Calcium %	22.5	Selenium yeast mg/kg	-
Phosphorus %	-	Copper (total) mg/kg	-
Magnesium %	0.2	Copper sulphate mg/kg	-
Sodium %	7.8	Chelated copper mg/kg	-
Sulphur %	-	Iron sulphate mg/kg	2000
Manganous oxide mg/kg	3000	Vitamin A iu/kg	400000
Zinc (total) mg/kg	4000	Vitamin D ₃ iu/kg	80000
Zinc oxide mg/kg	4000	Vitamin E mg/kg	1000
Chelated Zinc mg/kg	-	Vitamin B ₁ mg/kg	-
Cobalt mg/kg	40	Vitamin B ₁₂ mcg/kg	3000
Iodine mg/kg	200	Vitamin B2 mg/kg	-
Selenium (total) mg/kg	15	IF/FA	I/F
Selenium (BMP) mg/kg	15	Biosprint Y/N	N



For:
Dairy, Beef & Sheep

Feeding Time:
All Year

Feeding Rate:
100-200g head/day

Available in:
25kg



For:
Dairy, Beef & Sheep

Feeding Time:
All Year

Feeding Rate:
Incorporate into TMR
at 50g head/day

Available in:
25kg

MEGAMINS RUMEN BUFFER

- Acidosis is a metabolic disorder that occurs when rumen pH falls below normal. This can result in reduced or erratic feed intake consequently compromising animal performance. This is particularly relevant to high carbohydrate/low fibre diets. Megamins Rumen Buffer helps ameliorate problems associated with sub optimal rumen pH. It incorporates 3 different types of buffer which together have a higher buffering capacity than each on its own
- MEGAMINS Rumen Buffer contains a selection of mineral buffers to ameliorate problems associated with sub-optimal rumen pH and is useful for ruminants on high starch/cereal diets. MEGAMINS Rumen Buffer contains a combination of Acid Buf, magnesium oxide, salt and sodium bicarbonate

MEGAMINS BIOBIND

- Mycotoxins can have devastating effects throughout a herd and are steadily becoming a bigger issue on-farm
- MEGAMINS Biobind is a combination of six different raw materials to 'mop up' the main mycotoxins found in feeding stuffs, especially forages and cereals. Mycotoxins that are targeted by Biobind include Fumonisin B1, Zearalenone, Aflatoxin, Vomitoxin and Ochratoxin making the product broad spectrum
- Megamins biobind has also been proven to be effective over a wide pH range. Therefore it works in the rumen and also the rest of the more acidic digestive system

MEGALIX

**HIGH QUALITY
MOLASSES MINERAL
LICKS FOR DAIRY,
BEEF AND SHEEP**



MEGALIX MINERAL RANGE

Widely regarded as the highest quality molasses mineral tubs on the market, Megalix tubs are a popular and convenient method of providing bio-available minerals, trace elements and vitamins 24 hours a day.

The Megalix range of products are specially formulated to match a wide range of on-farm feeding systems and are an ideal way of supplementing livestock whilst reducing labour demands. Megalix products are fully weatherproof with no waste, ensuring livestock eat every last drop.

High Magnesium Licks

Cattle require magnesium in order to prevent hypomagnesaemia (grass staggers). Magnesium uptake by the cow is often challenged through a combination of factors including low levels in spring grass, reduced availability by high levels of potassium, changes in the diet causing increased rate of passage through the gut, and reduced blood levels during periods of stress.

Magnesium is a bitter tasting mineral not readily taken by animals, however when included in Megalix products, it is presented in a palatable form for optimum uptake, significantly reducing the risk of grass tetany. Combining the advantages of AGMA FG85 calcined magnesite, Megalix high mag licks are market leaders as the most bio-available magnesium supplements (See raw materials guide on page 4). The recognised supplement of magnesium for lactating dairy cattle during the risk periods is 30g per head per day, easily achievable through supplementing with any of the following high mag products.



For:
Beef & Dairy

Feeding Time:
All Year

Feeding Rate:
100-200g head/day

Available in:
20kg+80kg

MEGALIX COMPLETE

- ▶ High specification lick for lactating dairy and suckler cows
- ▶ Generous phosphorus level to prepare the cow for breeding
- ▶ Copper, selenium and zinc content bolstered with protected sources

Megalix Complete Specification

Calcium %	15	Cobalt mg/kg	80
Phosphorus %	6	Iodine mg/kg	400
Magnesium %	5	Selenium (total) mg/kg	35
Sodium %	4	Selenium (protected) mg/kg	2
Copper (total) mg/kg	2500	Vitamin A iu/kg	400000
Copper (protected) mg/kg	500	Vitamin D ₃ iu/kg	80000
Manganese mg/kg	3000	Vitamin E mg/kg	1000
Zinc (total) mg/kg	6000	Vitamin B ₁₂ mcg/kg	3000
Zinc (protected) mg/kg	500	Vitamin B ₁ mcg/kg	-



For:
Beef & Dairy

Feeding Time:
All Year

Feeding Rate:
100-200g head/day

Available in:
20kg+80kg



For:
Beef & Dairy

Feeding Time:
Spring/Autumn

Feeding Rate:
100-200g head/day

Available in:
20kg+80kg

MEGALIX CATTLE

- ▶ Cattle mineral lick with protected copper for year round use
- ▶ Carefully formulated balance of minerals and trace elements to achieve optimum health and performance
- ▶ Includes zinc and iodine, important for skin integrity

Megalix Cattle Specification			
Calcium %	12	Cobalt mg/kg	60
Phosphorus %	2	Iodine mg/kg	200
Magnesium %	6	Selenium (total) mg/kg	30
Sodium %	6.7	Selenium (protected) mg/kg	-
Copper (total) mg/kg	1000	Vitamin A iu/kg	200000
Copper (protected) mg/kg	200	Vitamin D ₃ iu/kg	40000
Manganese mg/kg	2000	Vitamin E mg/kg	500
Zinc (total) mg/kg	3000	Vitamin B ₁₂ mcg/kg	2000
Zinc (protected) mg/kg	-	Vitamin B ₁ mcg/kg	-

MEGALIX CATTLE EXTRA

- ▶ Specially formulated for the beef cow, summer or winter
- ▶ Increased levels of phosphorus and copper
- ▶ 10% Magnesium (AGMA FG85) widely regarded as the most bio-available and consistent magnesium on the market

Megalix Cattle Extra Specification			
Calcium %	11.5	Cobalt mg/kg	80
Phosphorus %	6	Iodine mg/kg	200
Magnesium %	10	Selenium (total) mg/kg	30
Sodium %	4	Selenium (protected) mg/kg	-
Copper (total) mg/kg	1500	Vitamin A iu/kg	200000
Copper (protected) mg/kg	300	Vitamin D ₃ iu/kg	40000
Manganese mg/kg	2000	Vitamin E mg/kg	500
Zinc (total) mg/kg	3000	Vitamin B ₁₂ mcg/kg	2000
Zinc (protected) mg/kg	-	Vitamin B ₁ mcg/kg	-



For:
Beef & Dairy

Feeding Time:
Spring/Autumn

Feeding Rate:
150-200g head/day

Available in:
20kg+80kg



For:
Beef, Dairy & Sheep

Feeding Time:
Spring/Autumn

Feeding Rate:
Cattle:
150-200g head/day
Sheep:
20-30g head/day

Available in:
20kg+80kg

MEGALIX QUATTRO MAG CATTLE

- ▶ Innovative high mag tub with four sources of highly bio-available magnesium
- ▶ Combines two quickly available sources with two slowly released sources of magnesium for the ultimate protection against grass staggers
- ▶ Feed to lactating dairy and suckler cows during known staggers risk periods

Megalix Quattro Mag Cattle Specification			
Calcium %	6.2	Cobalt mg/kg	60
Phosphorus %	0.8	Iodine mg/kg	200
Magnesium %	15	Selenium (total) mg/kg	30
Sodium %	5.9	Selenium (protected) mg/kg	-
Copper (total) mg/kg	1000	Vitamin A iu/kg	200000
Copper (protected) mg/kg	-	Vitamin D ₃ iu/kg	40000
Manganese mg/kg	2000	Vitamin E mg/kg	250
Zinc (total) mg/kg	3000	Vitamin B ₁₂ mcg/kg	2000
Zinc (protected) mg/kg	-	Vitamin B ₁ mcg/kg	-

MEGALIX QUATTRO MAG SHEEP

- ▶ Features all the benefits of MEGALIX Quattro Mag Cattle, however does not include copper.
- ▶ Designed to be fed in a mixed grazing system during known staggers risk periods

Megalix Quattro Mag Sheep Specification			
Calcium %	6.5	Cobalt mg/kg	40
Phosphorus %	0.8	Iodine mg/kg	200
Magnesium %	15	Selenium (total) mg/kg	30
Sodium %	5.9	Selenium (protected) mg/kg	-
Copper (total) mg/kg	-	Vitamin A iu/kg	200000
Copper (protected) mg/kg	-	Vitamin D ₃ iu/kg	40000
Manganese mg/kg	2000	Vitamin E mg/kg	250
Zinc (total) mg/kg	3000	Vitamin B ₁₂ mcg/kg	2000
Zinc (protected) mg/kg	-	Vitamin B ₁ mcg/kg	-



For:
Sheep

Feeding Time:
All Year

Feeding Rate:
20-30g head/day

Available in:
20kg+80kg



For:
Beef, Dairy & Sheep

Feeding Time:
All Year

Feeding Rate:
Cattle:
100-200g head/day
Sheep:
20-30g head/day

Available in:
20kg+80kg

MEGALIX SHEEP BOOSTER

- ▶ Fully balanced with high levels of vitamins, minerals and trace elements to care for ewes and lambs
- ▶ Formulated with a combination of cobalt and Vitamin B12 to help tackle 'pine'
- ▶ Vitamin B1 (Thiamine) included to reduce instances of CCN
- ▶ Protected zinc and the inclusion of iodine, selenium and sulphur to encourage good skin, hoof and wool quality

Megalix Sheep Booster Specification			
Calcium %	13.2	Cobalt mg/kg	40
Phosphorus %	3	Iodine mg/kg	400
Magnesium %	4	Selenium (total) mg/kg	20
Sodium %	6.1	Selenium (protected) mg/kg	-
Copper (total) mg/kg	-	Vitamin A iu/kg	200000
Copper (protected) mg/kg	-	Vitamin D ₃ iu/kg	40000
Manganese mg/kg	2000	Vitamin E mg/kg	1000
Zinc (total) mg/kg	5000	Vitamin B ₁₂ mcg/kg	4000
Zinc (protected) mg/kg	2000	Vitamin B ₁ mcg/kg	500

MEGALIX GARLIC GRAZER

- ▶ Iodine and zinc included to help maintain hoof and skin condition
- ▶ Inclusion of garlic as a natural aid to discourage fly strikes and other biting insects
- ▶ Generous levels of selenium to support immune function

Megalix Garlic Grazer Specification			
Calcium %	12.5	Cobalt mg/kg	40
Phosphorus %	2	Iodine mg/kg	200
Magnesium %	4	Selenium (total) mg/kg	30
Sodium %	7.8	Selenium (protected) mg/kg	-
Copper (total) mg/kg	-	Vitamin A iu/kg	200000
Copper (protected) mg/kg	-	Vitamin D ₃ iu/kg	40000
Manganese mg/kg	2000	Vitamin E mg/kg	250
Zinc (total) mg/kg	3000	Vitamin B ₁₂ mcg/kg	2000
Zinc (protected) mg/kg	-	Vitamin B ₁ mcg/kg	-



For:
Beef, Dairy & Sheep

Feeding Time:
All Year

Feeding Rate:
Calves:
30-50g head/day
Lambs:
5-20g head/day

Available in:
8kg+20kg

MEGALIX MENTHOL

- ▶ Contains a combination of menthol oil, eucalyptus oil, aniseed and garlic to maintain clear airways in calves and lambs
- ▶ A natural way to help reduce the incidences of respiratory irritation

Megalix Menthol Specification			
Calcium %	12.6	Iodine mg/kg	400
Phosphorus %	3	Selenium (total) mg/kg	20
Magnesium %	3	Selenium (protected) mg/kg	-
Sodium %	8	Vitamin A iu/kg	400000
Copper (total) mg/kg	-	Vitamin D ₃ iu/kg	80000
Copper (protected) mg/kg	-	Vitamin E mg/kg	4000
Manganese mg/kg	2000	Vitamin B ₁₂ mcg/kg	2000
Zinc (total) mg/kg	4000	Vitamin B ₁ mcg/kg	200
Zinc (protected) mg/kg	1000	Vitamin B ₂ mg/kg	200
Cobalt mg/kg	40	Vitamin C mg/kg	4000

“The MEGALIX range has long been one of Scotmin’s key brands since its introduction over 30 years ago. The product range and method in which it’s manufactured is continually been improved and updated, ensuring that MEGALIX products remain among the most sought after mineral blocks on the market.”

DR CLIFF LISTER - TECHNICAL DIRECTOR

PROPLUS

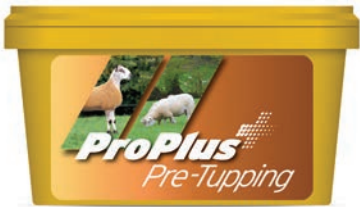
UNIQUE RANGE OF
PROTEIN AND ENERGY
SUPPLEMENTS
FOR ALL CLASSES
OF LIVESTOCK



PROPLUS FEED TUB RANGE

ProPlus is a leading range of molassed feed tubs that supply livestock with high energy from sugars and protected fat, whilst providing high quality DUP* protein from hipro soya (Digestible Undegradable Protein*).

Designed to help balance low protein diets and highly fermentable grass based diets, the ProPlus range is carefully balanced with vitamins, minerals and trace elements allowing livestock to achieve optimum performance. The ProPlus range can be incorporated into a number of on-farm feeding systems and is a convenient way to supplement livestock 24 hours a day.



For:
Sheep

Feeding Time:
Tupping

Feeding Rate:
30-50g head/day

Available in:
20kg+80kg

PROPLUS PRE-TUPPING

- ▶ Protein and energy lick designed to promote optimum fertility in both the ewe and tup at tupping time
- ▶ Provides high energy in the form of protected fat
- ▶ Full range of trace elements to encourage ovulation
- ▶ Salmon oil as a source of omega-3 for egg development and lamb viability

Proplus Pre-Tupping Specification			
Protein %	10	Selenium (total) mg/kg	10
Calcium %	7.8	Selenium (protected) mg/kg	-
Phosphorus %	1	Zinc (total) mg/kg	1500
Magnesium %	0.3	Zinc (protected) mg/kg	-
Sodium %	4	Vitamin A iu/kg	80000
Copper (total) mg/kg	-	Vitamin D ₃ iu/kg	16000
Cobalt mg/kg	40	Vitamin E mg/kg	250
Iodine mg/kg	60	Vitamin B ₁₂ mcg/kg	1000
Manganese mg/kg	1000	ME (DM) MJ/kg	13



For:
Beef, Dairy & Sheep

Feeding Time:
All Year

Feeding Rate:
Cattle:
100-200g head/day
Sheep:
20-50g head/day

Available in:
20kg+80kg



For:
Beef & Dairy

Feeding Time:
All Year

Feeding Rate:
100-200g head/day

Available in:
20kg+80kg

PROPLUS COMPLETE

- ▶ Contains DUP* to complement grazing
- ▶ Energy benefit from sugars and protected fat
- ▶ Minerals, vitamins and trace elements to balance typical pasture shortfall
- ▶ Ideal for ewes mid-gestation and summer grazing lambs

Proplus Complete Specification			
Protein %	16	Selenium (total) mg/kg	20
Calcium %	6.0	Selenium (protected) mg/kg	-
Phosphorus %	1.0	Zinc (total) mg/kg	3000
Magnesium %	3.0	Zinc (protected) mg/kg	-
Sodium %	5.3	Vitamin A iu/kg	200000
Copper (total) mg/kg	-	Vitamin D ₃ iu/kg	40000
Cobalt mg/kg	40	Vitamin E mg/kg	250
Iodine mg/kg	200	Vitamin B ₁₂ mcg/kg	2000
Manganese mg/kg	2000	ME (DM) MJ/kg	9.8

PROPLUS CATTLE

- ▶ A supplement to complement pasture based diets
- ▶ Rumen by-pass protein from soya bean meal to complement grazing
- ▶ Protected fat and sugar provide cattle with a useful source of energy
- ▶ Vitamins, minerals and trace elements incorporated to balance shortfalls in forage
- ▶ Added copper to specifically meet the needs of cattle

Proplus Cattle Specification			
Protein %	16	Selenium (total) mg/kg	20
Calcium %	6.0	Selenium (protected) mg/kg	-
Phosphorus %	1.0	Zinc (total) mg/kg	3000
Magnesium %	3.0	Zinc (protected) mg/kg	-
Sodium %	5.2	Vitamin A iu/kg	200000
Copper (total) mg/kg	1000	Vitamin D ₃ iu/kg	40000
Cobalt mg/kg	60	Vitamin E mg/kg	250
Iodine mg/kg	200	Vitamin B ₁₂ mcg/kg	2000
Manganese mg/kg	2000	ME (DM) MJ/kg	9.8



For:
Beef, Dairy & Sheep

Feeding Time:
Spring/Autumn

Feeding Rate:
Cattle:
150-200g head/day
Sheep:
30-50g head/day

Available in:
20kg+80kg



For:
Beef & Dairy

Feeding Time:
Spring/Autumn

Feeding Rate:
150-200g head/day

Available in:
20kg+80kg

PROPLUS MAG

- ▶ A protein and energy lick containing four sources of magnesium, two slow releasing and two fast releasing, providing the ultimate protection against staggers
- ▶ Targeted supplementation of protein for spring and autumn grazing
- ▶ Suitable for mixed grazing (cattle and sheep)

Proplus Mag Specification			
Protein %	10	Selenium (total) mg/kg	20
Calcium %	6.0	Selenium (protected) mg/kg	-
Phosphorus %	1.0	Zinc (total) mg/kg	3000
Magnesium %	11.0	Zinc (protected) mg/kg	-
Sodium %	3.4	Vitamin A iu/kg	200000
Copper (total) mg/kg	-	Vitamin D ₃ iu/kg	40000
Cobalt mg/kg	40	Vitamin E mg/kg	250
Iodine mg/kg	200	Vitamin B ₁₂ mcg/kg	2000
Manganese mg/kg	2000	ME (DM) MJ/kg	7.8

PROPLUS MAG CATTLE

- ▶ All the benefits of ProPlus Mag, with added copper and an increased level of cobalt to meet the specific needs of cattle

Proplus Mag Cattle Specification			
Protein %	10	Selenium (total) mg/kg	20
Calcium %	6.0	Selenium (protected) mg/kg	-
Phosphorus %	1.0	Zinc (total) mg/kg	3000
Magnesium %	11.0	Zinc (protected) mg/kg	-
Sodium %	3.1	Vitamin A iu/kg	200000
Copper (total) mg/kg	2000	Vitamin D ₃ iu/kg	40000
Cobalt mg/kg	60	Vitamin E mg/kg	250
Iodine mg/kg	200	Vitamin B ₁₂ mcg/kg	2000
Manganese mg/kg	2000	ME (DM) MJ/kg	7.8



For:
Beef, Dairy & Sheep

Feeding Time:
Spring/Autumn

Feeding Rate:
Cattle:
150-200g head/day
Calves & Sheep:
100-150g head/day

Available in:
20kg+80kg

PROACTIVE

- ▶ Provides a boost to gut health prior to stressful periods
- ▶ Supplies major and trace elements to overcome nutritional deficiencies
- ▶ Protein and energy, in the form of by-pass protein and rumen protected fat, encourages growth and development in young animals.
- ▶ Contains Biosprint® Live yeast, MOS, and a combination of essential oils to support both gut health and the immune system

ProActive Specification			
Protein %	12.8	Cobalt mg/kg	20
Oil %	5.1	Iodine mg/kg	50
Energy % MJ/kg DM	9.8	Selenium mg/kg	5
Sugar %	11.0	Vitamin A iu/kg	50000
Calcium %	8.8	Vitamin D ₃ iu/kg	10000
Magnesium %	1.5	Vitamin E iu/kg	1000
Phosphorus %	0.2	Vitamin B ₁ iu/kg	200
Sodium %	3.1	Vitamin B ₁₂ mcg/kg	500
Manganese mg/kg	500	Biosprint, MOS, Blend of essential oils	✓
Zinc mg/kg	750		

“ProActive is a cost effective method of providing a natural boost to the animals gut and immune system at times of challenge or stress especially in young animals aiding them to reach their full potential.”

ALAN RICHMOND - TECHNICAL MANAGER

BIOSPRINT

PROBIOTIC LIVE YEAST
PROVEN TO IMPROVE
RUMEN FUNCTION AND
LIVESTOCK PERFORMANCE
IN ALL CLASSES OF
LIVESTOCK



BIOSPRINT

Biosprint is a specific live yeast (*Saccharomyces cerevisiae* BCCM™ / MUCL39885), its principle purpose is to improve rumen function and stimulate appetite to achieve efficient and profitable production.

Biosprint reduces the risk of feed related digestive upsets and helps dairy cattle, beef cattle and sheep meet their genetic potential by giving the rumen a chance to work at its best. Biosprint enhances microbial activity in the rumen and stimulates the proliferation of fibre digesting and lactic utilising bacteria. The main effects of Biosprint in the rumen are:

- ▶ Stimulation of fibre digesting and lactate utilising microbes helping to maintain the rumen at optimal pH
- ▶ Live yeast uses up oxygen in the rumen and helps maintain the anaerobic environment rumen bugs prefer
- ▶ Increases microbial protein supply

Fully approved as an EU feed additive Biosprint has been proven to increase the milk yield of dairy cattle and improve live weight gain in beef cattle. Biosprint is ideally suited to all TMR feed systems, in pre-calving rations, during lactation and where high levels of starchy feeds and concentrates are being fed. Farmers who have already used the product note that cattle seem more content, are cudding better and production is improved. Biosprint can be fed as a straight feed as Biosprint Farm Mix or included in both mineral supplements, protein concentrates and molasses mineral licks.

“Biosprint® is a high concentrate probiotic live yeast (15 billion per gram), authorized according to European Regulation 1831/2003. Biosprint® improves the production performance of livestock by preserving their general state of health. Years of scientific research confirms improvements in feed conversion, milk yield and DLWG.”

ELLIE BURROUGHS - NUTRITIONIST



Biosprint® MUCL 39885 is a trademark of Prosol

For:
Beef

Feeding Time:
All Year

Feeding Rate:
Incorporate at one bag per tonne of cereals, 190g head/day

Available in:
25kg



Biosprint® MUCL 39885 is a trademark of Prosol

For:
Beef & Dairy

Feeding Time:
All Year

Feeding Rate:
Dairy: 40-50g head/day
Beef: 34g head/day

Available in:
25kg

BEEF BIOSPRINT

Beef Biosprint is the best selling beef mineral produced by Scotmin.

Specifically formulated to balance farm feed and supply Biosprint for efficient beef production. Can be fed free access, mixed with cereals or alternatively incorporated as part of a TMR.

Beef Biosprint Specification			
Calcium %	26.5	Copper mg/kg	1000
Phosphorus %	1	Selenium mg/kg	20
Magnesium %	1	Vitamin A iu/kg	300000
Sodium %	7.8	Vitamin D ₃ iu/kg	60000
Manganese mg/kg	2000	Vitamin E mg/kg	1000
Zinc mg/kg	4000	Vitamin B ₁₂ mcg/kg	2000
Cobalt mg/kg	40	Biosprint Live Yeast	✓
Iodine mg/kg	200		

Farm Mix for Dairy

- ▶ Improved milk yield by up to 2.5 litres per day
- ▶ Milk quality improved by stimulating protein response
- ▶ Increased dry matter intake

Farm Mix for Beef

- ▶ Up to 11% increase in DLWG
- ▶ Improved carcass conformation
- ▶ Reduced risk of feed related acidosis
- ▶ Improved feed conversion efficiency

SUPERFEED

**COMPREHENSIVE RANGE
OF PROTEIN BALANCERS
TO COMPLEMENT HOME
MIXED RATIONS**



SUPERFEED PROTEIN SUPPLEMENTS

A unique range of protein supplements incorporating Biosprint live yeast designed to balance home mixed rations.

High quality blend of assured protein sources together with high energy oils, minerals, vitamins and trace elements. The versatile Superfeed range can complement any ration; mixed with cereals, incorporated in TMR systems or simply top dressed.



For:
Beef

Feeding Time:
All Year

Feeding Rate:
3-6 bags depending
on required protein
level

Available in:
25kg

SUPERFEED GROWER

- ▶ High value natural protein product (no urea)
- ▶ Suitable for growing cattle including calves under 3 months of age
- ▶ Protein from hi-pro soya bean meal, prairie meal and rapeseed - high DUP level
- ▶ Contains Biosprint for increased DLWG and rumen modulation
- ▶ Incorporates a comprehensive range of vitamins and trace elements
- ▶ Can be mixed into cereal or top dressed

Superfeed Grower Specification			
Protein %	44	Vitamin E mg/kg	500
PE of NPN %	-	Vitamin B ₁₂ mcg/kg	-
Fibre %	3.3	Vitamin B ₁ mg/kg	-
Oil %	6	Manganese Oxide mg/kg	600
Ash %	11.4	Zinc Oxide mg/kg	750
Calcium %	2.7	Cobalt Carbonate (granulated) mg/kg	6
Magnesium %	0.3	Calcium Iodate Anhydrous mg/kg	30
Phosphorus %	0.6	Sodium Selenite mg/kg	3
Sodium %	-	Copper Sulphate mg/kg	150
Sulphur %	-	Biosprint Live Yeast	✓
Vitamin A iu/kg	80000	Safmannan	-
Vitamin D ₃ iu/kg	16000		



For:
Sheep

Feeding Time:
All Year

Feeding Rate:
4-8 bags depending
on required protein
level

Available in:
25kg



For:
Beef

Feeding Time:
All Year

Feeding Rate:
2-3 bags depending
on required protein
level

Available in:
25kg

SUPERFEED EWE & LAMB

- ▶ Suitable for ewes in late pregnancy and early lactation, as well as growing and finishing lambs
- ▶ Protein from hi-pro soya bean meal, rapeseed, prairie meal with high levels of DUP
- ▶ Contains MOS to help support the immune system and increase colostrum quality
- ▶ Includes vitamins and trace elements

Superfeed Ewe & Lamb Specification			
Protein %	40	Vitamin E mg/kg	1075
PE of NPN %	-	Vitamin B ₁₂ mcg/kg	250
Fibre %	3.9	Vitamin B ₁ mg/kg	100
Oil %	5	Manganese Oxide mg/kg	600
Ash %	16.5	Zinc Oxide mg/kg	750
Calcium %	4.7	Cobalt Carbonate (granulated) mg/kg	6
Magnesium %	0.3	Calcium Iodate Anhydrous mg/kg	30
Phosphorus %	0.7	Sodium Selenite mg/kg	4
Sodium %	-	Copper Sulphate mg/kg	
Sulphur %	-	Biosprint Live Yeast	✓
Vitamin A iu/kg	110000	Safmannan	✓
Vitamin D ₃ iu/kg	22000		

SUPERFEED FINISHER

- ▶ Contains urea, hi-pro soya bean meal, rapeseed, and wheat
- ▶ Suitable for poor/average quality silage or intensive cereal rations
- ▶ Urea helps utilise the fibre from straw or forage
- ▶ Contains Biosprint for increased DLWG and rumen modulation
- ▶ Incorporates sodium sulphate to increase nitrogen utilisation from urea
- ▶ Includes vitamins and trace elements

Superfeed Finisher Specification			
Protein %	60	Vitamin E mg/kg	300
PE of NPN %	38.8	Vitamin B ₁₂ mcg/kg	-
Fibre %	3.4	Vitamin B ₁ mg/kg	-
Oil %	4	Manganese Oxide mg/kg	800
Ash %	33.7	Zinc Oxide mg/kg	1000
Calcium %	9.4	Cobalt Carbonate (granulated) mg/kg	8
Magnesium %	0.3	Calcium Iodate Anhydrous mg/kg	40
Phosphorus %	0.4	Sodium Selenite mg/kg	4
Sodium %	2.5	Copper Sulphate mg/kg	400
Sulphur %	0.6	Biosprint Live Yeast	✓
Vitamin A iu/kg	80000	Safmannan	-
Vitamin D ₃ iu/kg	16000		



For:
Beef, Dairy & Sheep

Feeding Time:
All Year

Feeding Rate:
10-80g depending
on animal type

Available in:
25kg



For:
Beef

Feeding Time:
All Year

Feeding Rate:
4-7 bags depending
on required protein
level

Available in:
25kg

SUPERFEED THRIVON

- ▶ A traditional formulation for over eight decades, designed for youngstock and showing animals
- ▶ Fish oils (salmon and anchovy) help provide a shine on coats and to develop supple skin, high in omega-3 fatty acids
- ▶ Iodine to help develop good skin and hair condition
- ▶ Vitamin E is an essential part of the immune system
- ▶ Can be used in combination with other Superfeed products

Superfeed Thrivon Specification			
Protein %	8	Vitamin E mg/kg	1000
PE of NPN %	-	Vitamin B ₁₂ mcg/kg	1000
Fibre %	8.5	Vitamin B ₁ mg/kg	500
Oil %	15.1	Manganese Oxide mg/kg	-
Ash %	32.2	Zinc Oxide mg/kg	-
Calcium %	7.8	Cobalt Carbonate (granulated) mg/kg	-
Magnesium %	0.2	Calcium Iodate Anhydrous mg/kg	300
Phosphorus %	0.3	Sodium Selenite mg/kg	-
Sodium %	4	Copper Sulphate mg/kg	-
Sulphur %	-	Biosprint Live Yeast	-
Vitamin A iu/kg	330000	Safmannan	-
Vitamin D ₃ iu/kg	66000		

SUPERFEED FLEX

- ▶ Natural protein product (no urea)
- ▶ Suitable for a growing and finishing cattle, including calves under 3 months of age
- ▶ Protein comes from hi-pro soya and wheat
- ▶ Contains Biosprint for increased DLWG and rumen modulation
- ▶ Incorporates vitamins and trace elements
- ▶ Can be mixed into cereal or top dressed

Superfeed Flex Specification			
Protein %	40	Vitamin E mg/kg	250
PE of NPN %	-	Vitamin B ₁₂ mcg/kg	-
Fibre %	3.4	Vitamin B ₁ mg/kg	-
Oil %	3.9	Manganese Oxide mg/kg	400
Ash %	10.6	Zinc Oxide mg/kg	500
Calcium %	2.2	Cobalt Carbonate (granulated) mg/kg	4
Magnesium %	0.3	Calcium Iodate Anhydrous mg/kg	20
Phosphorus %	0.7	Sodium Selenite mg/kg	2
Sodium %	-	Copper Sulphate mg/kg	200
Sulphur %	-	Biosprint Live Yeast	✓
Vitamin A iu/kg	40000	Safmannan	-
Vitamin D ₃ iu/kg	8000		



For:
Beef, Dairy & Sheep

Feeding Time:
All Year

Feeding Rate:
3 bags per finished
tonne of mixed
cereal

Available in:
25kg

SUPERFEED INTENSIVE

- ▶ Protein from Urea, providing an economic protein supplement
- ▶ Suitable for intensive finishing cattle, especially on cereal with straw rations
- ▶ Urea helps utilise the fibre from straw or forage
- ▶ Contains Biosprint for increased DLWG and rumen modulation
- ▶ Contains sodium sulphate to increase nitrogen utilisation from urea
- ▶ Includes vitamins and trace elements

“The Superfeed range is versatile and flexible allowing the efficient use of home grown forages. Our experienced nutrition department can formulate home mixed cereal diets ensuring our customers make the most out of the forage they have available.”

ALAN RICHMOND - TECHNICAL MANAGER

Superfeed Intensive Specification			
Protein %	50	Vitamin E mg/kg	300
PE of NPN %	48.3	Vitamin B ₁₂ mcg/kg	-
Fibre %	-	Vitamin B ₁ mg/kg	-
Oil %	2.8	Manganese Oxide mg/kg	600
Ash %	62.9	Zinc Oxide mg/kg	750
Calcium %	16.4	Cobalt Carbonate (granulated) mg/kg	6
Magnesium %	0.3	Calcium Iodate Anhydrous mg/kg	30
Phosphorus %	-	Sodium Selenite mg/kg	3
Sodium %	8.5	Copper Sulphate mg/kg	400
Sulphur %	0.5	Biosprint Live Yeast	✓
Vitamin A iu/kg	80000	Safrmannan	-
Vitamin D ₃ iu/kg	16000		

MEGASILE BON SILAGE

A UNIQUE RANGE
OF SILAGE ADDITIVES
FOR OPTIMAL ENSILING
PERFORMANCE



MEGASILE FORAGE ADDITIVES

Over the last 25 years there have been significant improvements in the way that forage is harvested, ensiled and fed. The quality and consistency of silage is an important factor in any ruminant production system, which can often determine the outcome of a successful winter-feeding programme.

The quality and quantity of silage available has a direct impact on livestock performance, influencing milk yields in lactating dairy and beef cows and live weight gains in growing/finishing beef cattle and sheep. Quality silage with high dry matter, crude protein and energy can help ease on farm costs by reducing the need for additional supplementation over the winter months.

Careful grassland management and crop husbandry is key, along with the selection of the correct silage additive. The Megasile range offers two variations, each carefully formulated to quickly stabilise pH levels, ensuring a high-quality silage is produced.

Product Suitability	Megasile	Megasile HDM
Grass <30% DM	x	
Clover grass mix >30% DM		x
Grass >30% DM high sugar content		x
Maize		x
Cereals whole crop		x
Alfalfa/Lucerne	x	

MEGASILE

In preserving grass as a stable, palatable silage, the aim is to convert sugar present in the grass to acid, effectively pickling the grass as a stable silage.



Application:
1.5g per treated
tonne

Treats:
1 Sachet treats 50
tonnes

Available in:
75g Sachet

In low dry matter grass or lucerne crops buffering capacity is increased due to the levels of protein and water. This requires a greater production of acid to reduce the pH effectively. Lactic acid is the strongest of the organic acids, so producing lactic acid from sugar in the grass will drop the pH faster than producing any other acids by fermentation - so a fermentation dominated by lactic-acid-producing bacteria is needed.

“Homofermentative” lactic acid bacteria, ferment sugar to produce only lactic acid, meaning they are much more efficient in bringing about a rapid drop in pH. Megasile, includes 5 different strains of homofermentative lactic acid bacteria, which interact rather like a relay team, working together to reduce the pH very quickly after the grass is ensiled. This produces a stable pH faster after the grass is ensiled which ensures more of the original nutrients in the grass are preserved in the final silage.

- ▶ Faster fermentation (pH drop) - Achieving a stable silage more quickly
- ▶ Reduces DM and protein losses - Preserving more nutrition in the silage
- ▶ Increases silage energy, digestibility and palatability
- ▶ Improves silage intakes for enhanced animal performance

MEGASILE HDM

Specially formulated to achieve a stable fermentation and enhance aerobic stability of all higher dry matter forages (grass, grass/clover mixture, maize and wholecrop silages).

Within these crops there is usually a significant amount of “residual” sugar left in the silage after it has been effectively ensiled. The issue with these high dry matter silages is that once the clamp is opened, the yeasts and moulds naturally present in the crop at the time of ensiling “wake up”, due to the presence of oxygen and start to ferment the residual sugars in the silage. This fermentation not only wastes nutrients present in the silage, but it heats up the silage making it much less stable after clamp opening. Silage can be seen heating up both in the feed trough and on the face of the clamp. This is aerobic spoilage.

Megasile HDM contains a “Homofermentative” lactic acid producing bacteria to rapidly preserve the nutrients present in the crop, together with a special heterofermentative lactic acid (*L. buchneri*) which dramatically reduces the occurrence of aerobic spoilage, preserving more nutrients in the silage for longer after feed out. This will also result in reduced clamp losses at the clamp face.



Application:
1.5g per treated
tonne

Treats:
1 Sachet treats 100
tonnes

Available in:
150g Sachet

- ▶ Rapid and sustained pH drop to preserve the nutrients in the silage
- ▶ Reduces yeast and mould growth after clamp opening
- ▶ Increases aerobic stability - Silage stays palatable for longer after feedout



Application:
1g per treated tonne

Treats:
1 bottle = 50 tonnes

Available in:
50g bottles

BONSILAGE PLUS (Liquid and Granules)

Accurately balanced combination of five hetero - and homofermentative lactic acid bacterial strains for the higher end of the DM range (> 30 %). The silage additive BONSILAGE PLUS increases the energy density of the silage through improved digestibility and reduces reheating by inhibiting yeasts and moulds.

Range of application

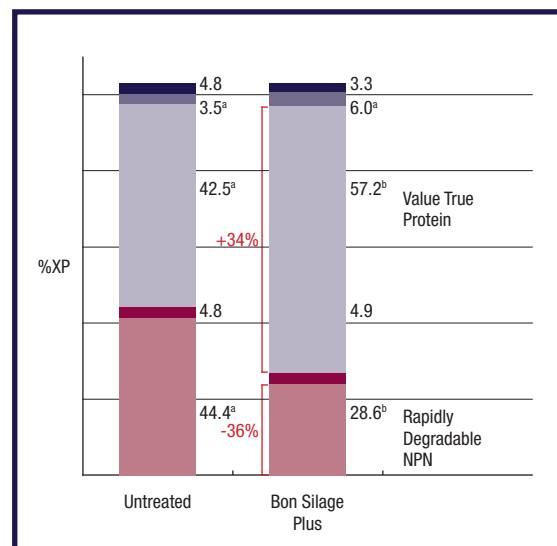
Grass, clover, lucerne, fodder rye, whole-crop silages:
28-45 % DM

Minimum storage period

8 weeks

- ▶ Optimum fermentation acid pattern in the upper DM range
- ▶ Improves digestibility
- ▶ Higher energy density
- ▶ Controlled acetic acid formation reduces reheating
- ▶ Better crude protein quality

Bonsilage Plus reduces protein degradation (DM range of 30-40%)



- C = Protein, not available in the rumen and small intestine
- B² = Cell wall protein, available slowly
- B² = Protein, potentially available
- B¹ = Protein, available rapidly
- A = NPN Compounds

Source: LWK Niedersachsen, University of Hohenheim
2011



Application:
1g per treated tonne

Treats:
1 bottle = 100 tonnes

Available in:
100g bottles

BONSILAGE FIT

Bonsilage Fit gives measurably improved cow fitness in your silage. Eighty percent of dairy cow diseases occur during transition and calving. This is mainly due to an energy deficit which leads to metabolic disorders and other diseases. Bonsilage FIT not only preserves your silage but also optimises the energy properties. In addition to this, Bonsilage FIT provides a high level of aerobic stability at feed out time. Feed-related diseases such as acidosis and ketosis can now be influenced by using Bonsilage FIT. The formation of glucoplastic components such as propylene glycol relieves the cow's metabolism at the start of lactation for measurably improved cow fitness.

Range of application

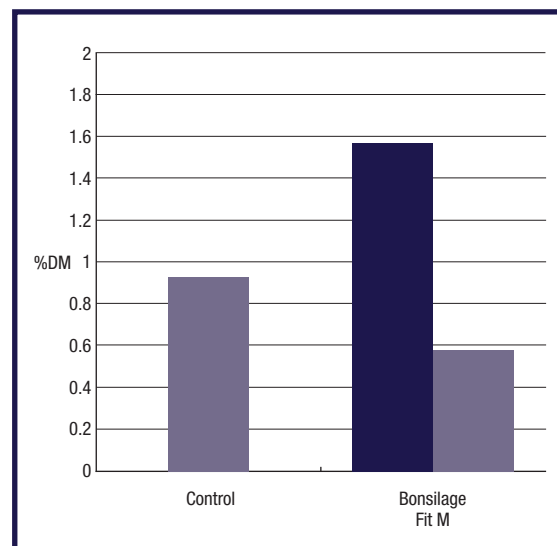
Maize, Grass and Whole-crop silages from 25-45% DM

Minimum storage period

8 weeks

- ▶ Average 2.7% propylene glycol in grass silages in UK conditions
- ▶ Acetic acid formation means extra long stability at the face and in TMR
- ▶ Average of 7.5% lactic acid means well preserved silage but reduced rumen acid loading

Bonsilage Fit increases the proportion of propylene glycol





Application:
1g per treated tonne

Treats:
1 bottle = 100 tonnes

Available in:
100g bottles

BONSILAGE SPEED M (Liquid)

The specialist for a reduced silo ripening period. The special combination of homofermentative and heterofermentative lactic acid bacteria (LAB) strains ensures intensive fermentation in starch-rich silages during the first few weeks of ensiling. The strain *Lactobacillus diolivorans* reduces the silo ripening time to two weeks with the lowest losses and highest energy content. The ensiling agent protects against reheating and improves the aerobic stability. *Lactobacillus diolivorans* is an entirely new heterofermentative lactic acid bacteria strain with a unique metabolism and synergistic effect.

Range of application

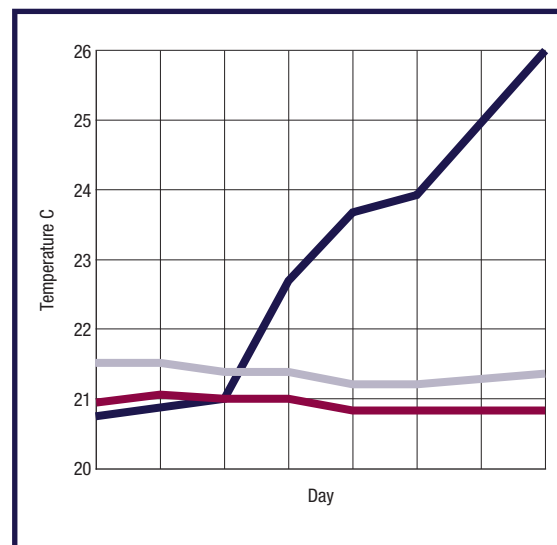
Maize silages and whole-crop-silages with 25-45 % DM

Minimum storage period

2 weeks

- ▶ Ensures intensive fermentation during the first few weeks in starch-rich silages
- ▶ Protects against reheating
- ▶ Improves the aerobic stability after just 14 days of silage maturing
- ▶ *L. diolivorans*: The only EU-approved strain of this type with an innovative, hitherto unknown metabolism

Stable silage after just 14 days of silo maturing



■ Bonsilage Speed M
■ Control
■ Ambient temperature

SALT LICKS

**MINERALISED AND
NON-MINERALISED SALT
LICKS FOR DAIRY,
BEEF AND SHEEP**



SOLSEL SALT LICKS

Modern animal husbandry means, among other things, optimal feeding! Healthy and efficient animals require balanced minerals in their bodies.

Salt Lick blocks are a simple and effective way of feeding supplements. They provide livestock with crucial minerals and trace elements such as Sodium, Magnesium, Calcium, Manganese, Zinc, Iodine, Selenium and Copper.

The salt requirement of an animal is very individual - this depends on the type of animal, as well as its age, usage, and demanded performance. The animal instinctively and efficiently takes care of its own feeding: It licks the salt until the demand has been fulfilled, which means there is no overdosing or addictive behaviour. At the same time, this method is also ideal in supplying the animal with additional minerals.



- For:**
Beef, Sheep & Dairy
- Feeding Time:**
All Year
- Feeding Rate:**
Ad Lib
- Available in:**
10kg

SOLSEL UNIVERSAL

Along with salt (sodium chloride), every animal consumes a series of minerals and microelements like zinc, manganese, copper, iron, iodine, and selenium. Each of these elements takes on an important role within the animal.

Mineral lick blocks without copper were developed especially for the feeding of sheep. SOLSEL® Universal was created without the element of copper in order to exclude any intolerances of this kind, making it perfectly suitable for beef, sheep and dairy livestock.

Solsel Universal Specification			
Sodium %	38	Manganese mg/kg	1000
Calcium %	0.5	Iron mg/kg	200
Magnesium %	0.1	Iodine mg/kg	100
Zinc %	1000	Selenium mg/kg	20



For:
Beef & Dairy

Feeding Time:
All Year

Feeding Rate:
Ad Lib

Available in:
10kg

SOLSEL EXTRA

The individual mineral needs of an animal can vary significantly – even within a homogenous group. SOLSEL® Extra mineral lick blocks, along with basic feeding ensure livestock receive the minimum daily requirement of essential minerals. The blocks are available 24 hours a day allowing livestock to regulate their own intake.

Solsel Extra Specification			
Sodium %	37	Manganese mg/kg	6600
Calcium %	1.2	Copper mg/kg	1100
Magnesium %	0.1	Iodine mg/kg	100
Zinc %	8250	Selenium mg/kg	25



For:
Beef, Sheep & Dairy

Feeding Time:
All Year

Feeding Rate:
Ad Lib

Available in:
25kg

SOLSEL NATURAL

The sufficient supply of salt, minerals, and microelements is the prerequisite for the health all livestock. SOLSEL® Natural provides cost effective feed supplement that meets the needs of todays livestock. The stability of the lick is a result of lengthy test series and permanent endurance tests. This guarantees high weather resistance as well as even consumption. SOLSEL® Natural saltlick blocks are manufactured as pure rock or evaporated salt according to a specialized press process.

Specification:
Sodium 39%

SCOTFAT BUTTERSCOTCH

**SPECIALLY SELECTED
FATS FOR HIGH
PERFORMANCE
DAIRY COWS**



SCOTFAT

A unique blend of specially selected fatty acids that are processed into a palatable friable meal. UFAS quality assured.

Developed specially for the high yielding dairy cow. The unique formulation uses a blend of oils to give an improved fatty acid profile that maximises the energy value. The special formulation of Scotfat includes high Omega 3 oils. Omega 3 oils increase the VFA production of the rumen and can increase dry matter intakes. The Omega 3 oils also have an anti-inflammatory effect and improve immune response. Scotfat is presented on a slow release base that ensures maximum digestibility without any metabolic disturbance.

Designed to be fed as part of a complete diet or incorporated into home mixes and blends. It can also be top dressed onto forage. Suitable for feeding to all high yielding cows allowing them to reach their full genetic potential

“Incorporating a unique blend of Omega fish oils and energy, Scotfat improves dry matter intake and feed conversion efficiency, enhancing milk yields in dairy cows.”

ELLIE BURROUGHS - NUTRITIONIST



For:
Dairy

Feeding Time:
All Year

Feeding Rate:
400-600g head/day

Available in:
25kg

- ▶ Increases the energy density of the diet
- ▶ Maximises digestible energy available to the cow
- ▶ Allows the dry matter intakes to be maximised
- ▶ Increases milk yield and milk quality
- ▶ Improves fertility by reducing body condition loss
- ▶ Reduces inflammation and helps to improve the immune response

Scotfat Specification			
Oil %	50	Ash	7
Protein %	6	ME (DM) MJ/kg	27.0
Fibre %	14		

BUTTERSCOTCH

A specially selected fatty acid blend, high in C16 Palmitic acid combined with a glucose syrup and processed into a free-flowing dust-free meal. Butterscotch is UFAS quality assured.

Designed to be fed to high performing dairy cows for raising butterfat and milk yields. The blend of fatty acids, high in C16 Palmitic acid, is such to maximise synergistic effects on net energy yield and to raise C16 levels in milk. The blend of oils is selected so that the melting point is below that of the rumen ensuring maximum digestibility of the C16 fatty acids.

Presented on a slow release base to ensure maximum utilisation with no metabolic disturbances, with glucose included to enhance liver function.

Butterscotch is designed to be fed as part of a complete diet. It can also be incorporated into home mixes, blends and compounds. Suitable for feeding to all high yielding dairy cows to allow them to perform to their genetic potential



For:
Dairy

Feeding Time:
All Year

Feeding Rate:
500-750g head/day

Available in:
25kg

- ▶ Increases butterfat levels in milk
- ▶ Increases milk yields
- ▶ Improves body condition
- ▶ Does not depress dry matter intake

Butterscotch Specification			
Oil %	55	Ash	12
Protein %	3.5	ME (DM) MJ/kg	28.5
Fibre %	8.6		

“The combination of specially selected fatty acids contained within Butterscotch significantly increase both milk yields and butterfat levels.”

DR CLIFF LISTER TECHNICAL DIRECTOR



01292 280909
info@scotmin.com
www.scotmin.com

