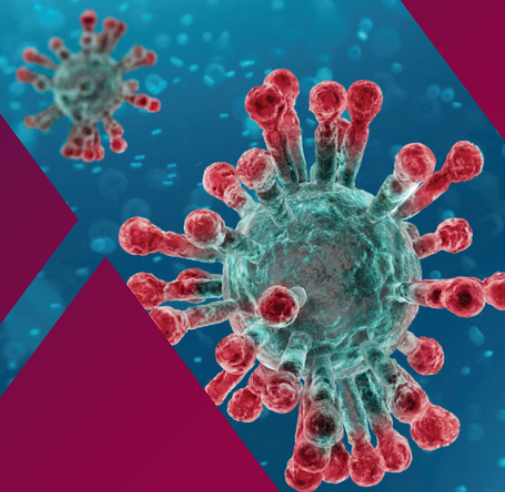




Focus

Our Informative Quarterly Newsletter
Issue 10 **Summer 2020**

Image
Coronavirus, Main Story



Main Story

Covid-19 Business Update

It seems like a lifetime ago since the UK government announced a nationwide lockdown, forcing non essential businesses to close their doors in an effort to reduce the spread of Covid-19.

During lockdown we are proud to say that Scotmin has been able to continue serving the agricultural community through the diligent efforts of our entire team.

A number of social distancing measures and safe working practises have been adopted at our manufacturing plant in Ayr, to ensure that we continue producing products in a safe and sustainable way. Our dedicated sales and technical teams remain on hand, working from home to answer any questions you may have. The production team is working harder than ever, producing essential products for both UK and EU agriculture, whilst our drivers remain

fully operational, adhering to safe working practices in order to continue delivering goods direct to farm across the United Kingdom.

The Scotmin procurement team have been working behind the scenes to ensure that manufacturing continues with as few interruptions as possible. At this moment in time our supply chain remains intact and our existing stock remains healthy.

As we look to the future there appears to be a glimmer of light on the horizon with UK and Scottish governments considering easing social distancing measures. There is undoubtedly a long way to go before this virus is under control, however we would like to thank our staff for their continued efforts during these unprecedented times, and offer gratitude to our customers for everything they do to in order to feed the nation. ■



ProActive

ProActive is a new feed block from Scotmin designed to boost gut health and support the immune system of cattle and sheep.

The unique formulation of ProActive includes four ingredients specifically chosen for their gut boosting properties: oregano oil, garlic, Biosprint Live Yeast and MOS (mannan oligosaccharides).

Vitamins, minerals and trace elements are included to support the developing immune system, with high quality protein and energy being incorporated to promote growth rates in young animals. ■



Scotmin Nutrition



MEGALIX Garlic Grazer the Natural Way to Keep Biting Insects Away from Livestock:

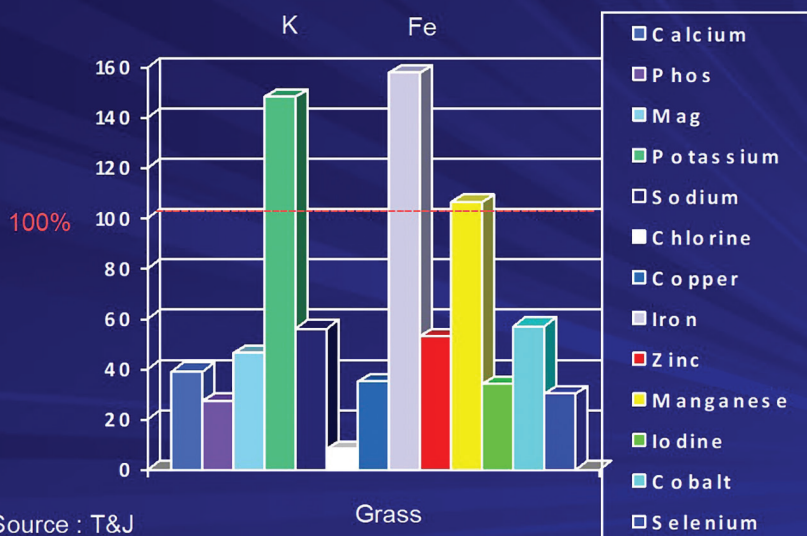
Widely regarded as the highest quality molasses mineral tubs on the market, Megalix Garlic Grazer tubs are a popular and convenient method of providing bioavailable minerals and trace elements 24 hours a day.

Megalix Garlic Grazer contains high levels of garlic which when consumed by livestock is excreted through the skin, providing an invisible screen over the animal's body helping to repel biting insects. This can reduce the risk of insect bites, allowing livestock to graze without irritation. Megalix Garlic Grazer is a natural way of dealing with flies, midges and other biting insects. Livestock farmers have limited options to help keep nuisance biting insects away from stock, however feeding

Megalix Garlic Grazer offers a natural solution, along with providing generous levels of selenium to support immune function. For optimal animal performance at grass and to help in the fight against airborne biting insects, pick up a tub of Megalix Garlic Grazer. ■



Minerals and Vitamins in UK Grassland



Dale's Diary



Why Use Supplements

In these difficult times for farming cost savings are vital to ensure we maintain some element of margin. So called peripheral items are often removed in these situations and are seen as a way of reducing costs.

Don't forget Minerals enable the animal to make use of the nutrients provided in the ration and when lacking may inhibit normal growth and function. It is important that the mineral nutrition is balanced but that the macro elements of nutrition including energy, protein and water requirements are met as well.

Consequences of reducing, removing or imbalanced minerals can be severe but not always immediately obvious. Indeed, in some circumstances animals may be ok for up to 3-6 months but problems then appear which can take the next 12 months to resolve.

The following are some signs of trace mineral deficiency in cattle:

Poor coat colour, poor calf immunity, reduced weight gain, reduced reproductive efficiency, poor hoof growth, reduced milk production, staggers and milk fever.

The chart on the left shows that generally UK grassland does not have sufficient minerals to support the animal's requirements and should therefore be supplemented accordingly.

The choice is yours, but we would always recommend carrying out a mineral survey of the diet to ensure balances are correct and no deficiencies occur. ■

**Experts in
Livestock Nutrition**

**SCOTMIN
NUTRITION**

www.scotmin.com

